

**ULTRA SERIES  
BOOM LIFTS**

**JLG**

# ULTRA SERIES TELESCOPIC BOOM LIFTS

## SPECIFICATIONS

### 1350SJ

#### Ultra Series Telescopic Boom Lifts

##### Reach Specifications

|                                |                                |                |
|--------------------------------|--------------------------------|----------------|
| Platform Height                | 135 ft (41.15 m)               |                |
| Horizontal Reach               | 80 ft (24.38 m)                |                |
| Up and Over Height             | —                              |                |
| Swing                          | 360° Continuous                |                |
| Platform Capacity—Restricted   | 1,000 lb (454 kg)              |                |
| Platform Capacity—Unrestricted | 500 lb (227 kg)                |                |
| Platform Rotator               | 180°                           |                |
| JibPLUS®                       | Length                         | 8 ft (2.44 m)  |
|                                | Horizontal Motion <sup>1</sup> | 180°           |
|                                | Vertical Motion                | 130° (+75/-55) |

##### Dimensional Data

|                     |                             |                           |
|---------------------|-----------------------------|---------------------------|
| A. Platform Size    | 36 x 96 in. (0.91 x 2.44 m) |                           |
| B. Overall Width    | Axles Retracted             | 8 ft 2 in. (2.49 m)       |
|                     | Axles Extended              | 12 ft 6 in. (3.81 m)      |
| C. Tailswing        | 5 ft 6 in. (1.67 m)         |                           |
| D. Stowed Height    | 10 ft (3.05 m)              |                           |
| E. Overall Length   | Jib Stowed                  | 37 ft 7 in. (11.45 m)     |
|                     | Jib Deployed                | 48 ft 10.25 in. (14.89 m) |
| F. Wheel Base       | Axle                        | 12 ft 6 in. (3.81 m)      |
|                     | Chassis                     | 25.5 in. (65 cm)          |
| G. Ground Clearance | Axle                        | 12 in. (30 cm)            |
|                     | Chassis                     | 25.5 in. (65 cm)          |
| Weight <sup>2</sup> | 45,000 lb (20,411 kg)       |                           |

##### Chassis

|                               |                                    |                      |
|-------------------------------|------------------------------------|----------------------|
| Max Ground Bearing Pressure*  | 107 psi (7.52 kg/cm <sup>2</sup> ) |                      |
| Drive Speed                   | 3.25 mph (5.2 km/h)                |                      |
| Gradeability                  | 45%                                |                      |
| Turning Radius (Inside)       | Axles Retracted                    | 14 ft 5 in. (4.39 m) |
|                               | Axles Extended                     | 8 ft (2.44 m)        |
| Turning Radius (Outside)      | Axles Retracted                    | 22 ft 6 in. (6.86 m) |
|                               | Axles Extended                     | 19 ft 4 in. (5.89 m) |
| Crab Steer Ratio <sup>3</sup> | 1:1                                |                      |
| Axle Oscillation              | 12 in. (30 cm)                     |                      |
| Tires/Type                    | 445/50D710 Foam Filled             |                      |

##### Power Source

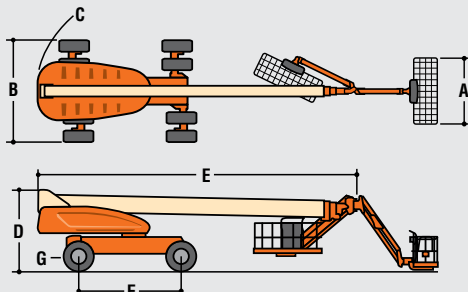
|                              |                |                   |
|------------------------------|----------------|-------------------|
| Diesel Engine                | Deutz TD2011L4 | 74.9 hp (55.9 kW) |
| Fuel Tank Capacity           |                | 31 gal (117 L)    |
| Hydraulic Reservoir          |                | 55 gal (208 L)    |
| Auxiliary Power              |                | 12V DC            |
| Generator Nominal/Continuous |                | 7,500 Watt        |

\* Ground bearing pressure applies to standard tires.

1. Capacity is limited to 500 lb (227 kg) when JibPLUS is extended horizontally.

2. Certain options or country standards increase weight.

3. Ratio of forward travel to lateral travel.



##### Standard Features

Platform: 36 x 96 in. (0.91 x 2.44 m) Side Entry  
 8 ft (2.44 m) JibPLUS® Boom  
 Selectable Capacity Envelope  
 Inward Swinging Gate  
 180° Hydraulic Platform Rotator  
 AC Receptacle in the Platform  
 SkyPower® Package  
 7500 Watt Generator  
 • 240/120V Single Phase  
 • 240V 3 Phase  
 1/2 in. Air Line to Platform  
 5 Degree Tilt Alarm/Indicator Light  
 All Motion Alarm  
 Swing-Out Engine Tray  
 12V DC Auxiliary Power  
 Hourmeter  
 Control ADE® System  
 Full-time 4WD  
 3 Selectable Steering Modes  
 Drive-out Extendible Axles  
 Oscillating Axle  
 Proportional Controls  
 Gull-Wing Hoods  
 Operator Tool Tray  
 445/50D710 Foam Filled Rim Protector Lug Tread Tires  
 Platform Console Machine Status Light Panel\*  
 Lifting/Tie Down Lugs  
 Engine Distress Warning/Shutdown—Selectable via JLG Analyzer

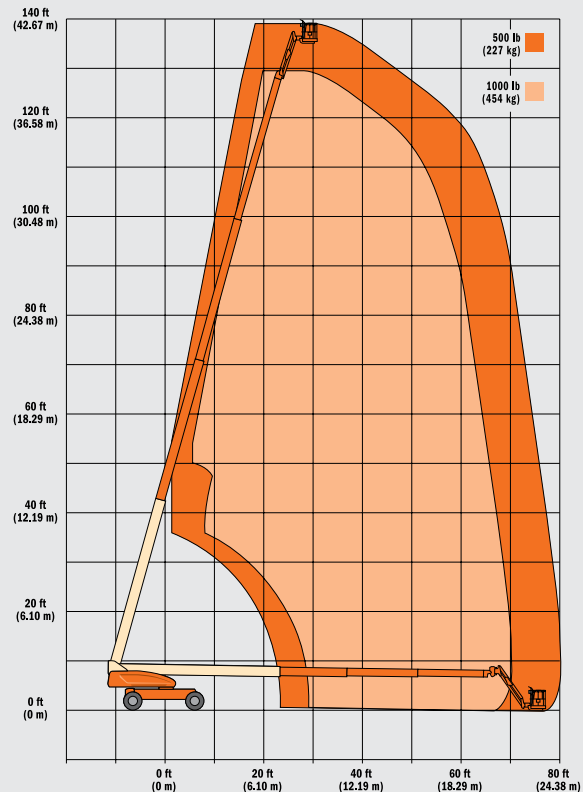
##### Available Options

Platform: 36 x 72 in. (0.91 x 1.83 m) Side Entry  
 Fall-Arrest Platform: 36 x 96 in. (0.91 x 2.44 m) Side Entry  
 Light Package<sup>1</sup>  
 Flashing Beacon  
 Soft-Touch System Platform  
 6 ft/8 ft (1.83 m/2.44 m)  
 Clearsky (US and Canada only)  
 Cold Weather Start<sup>2</sup>  
 Hostile Environment Kit<sup>3</sup>  
 Mesh to Top Rail  
 1. Includes platform mounted work lights and drive/backup lights.  
 2. Includes glow plugs, battery heater and oil tank heater.  
 3. Includes console cover, boom wipers and cylinder bellows.

##### Accessory Packages

SkyWelder®  
 SkyCutter®  
 SkyAir® (1200/1350SJ only)  
 SkyGlazier®  
 Nite Bright®  
 Pipe Racks

\* Provides indicator lights at platform control console for system distress, fuel level, low fuel, 5 degree tilt light and foot switch status.



For complete specifications, visit [www.jlg.com](http://www.jlg.com)